

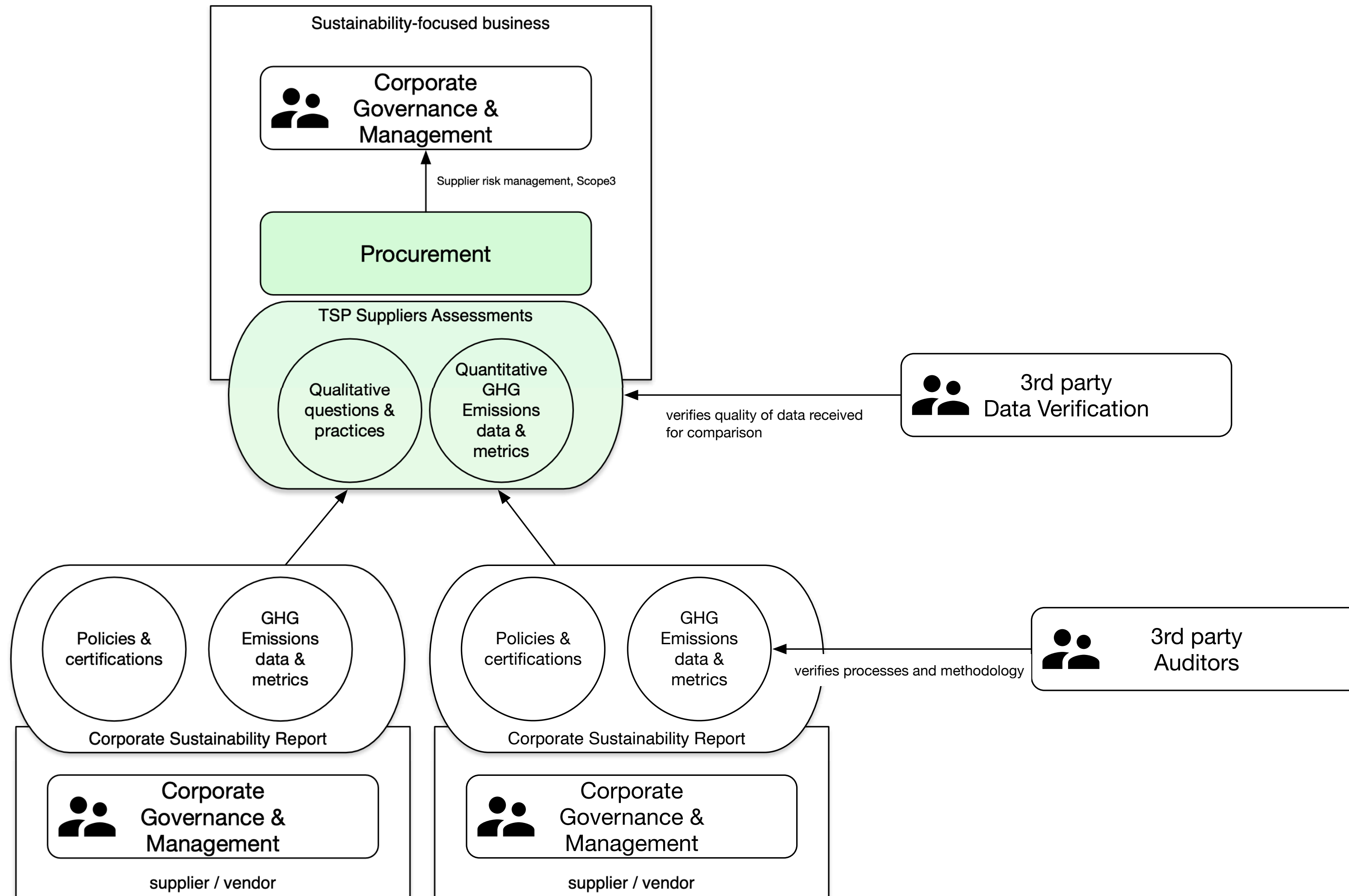
# The Sustainability Project (TSP) API Overview

**TSP for Suppliers Sustainability Initiatives Since 2018**



# Where does TSP fit in ESG management workflows?

## Supply Chain Sustainability Programs



### For sourcing events

Industry-standard lightweight Environmental, Social and Governance questionnaire bundled with Desktop verification that sets **across the board expectations**.

*“This tool reinforces our internal goals by signaling our leadership that this is what our clients are asking us to do and the direction the industry is going in.”*  
- ESG leader at transformers supplier

### For improvement planning

Systematically **identify supply chain gaps against industry peers**, create guidelines and deliver training.

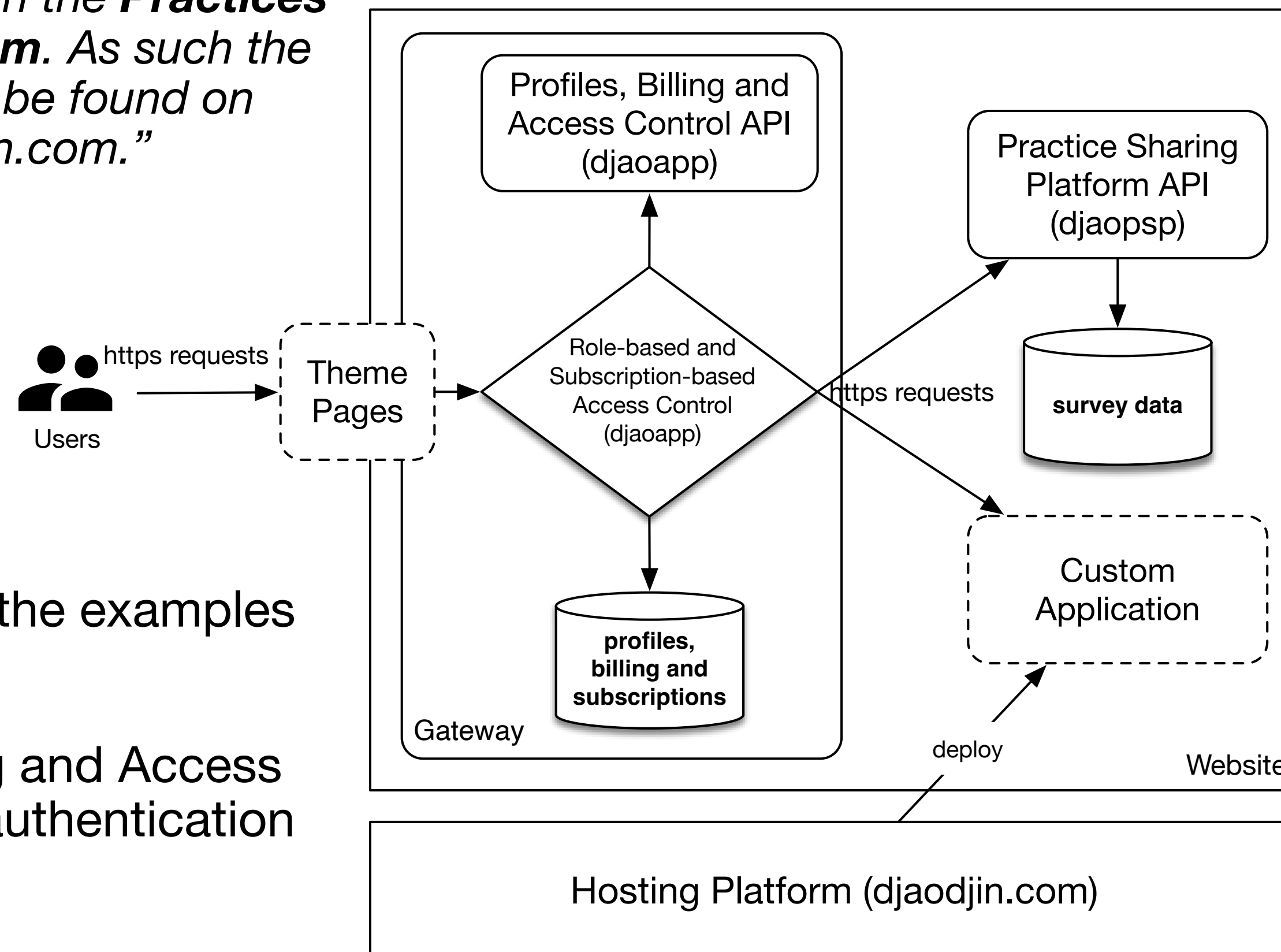
# TSP - Used by 28 Energy Utilities

Since 2018 TSP has supported Energy Utilities across North America to manage their suppliers ESG risk assessments through the Sustainable Supply Chain Alliance.



# Where to find API documentation?

*“tspproject.org is one tenant in the **Practices Survey Platforms eco-system**. As such the technical documentation can be found on the hosting platform - [djaodjin.com](http://djaodjin.com).”*



## TIPS

- Use [www.tspproject.org](http://www.tspproject.org) in the examples given.
- Look at the “Profiles, Billing and Access Control” API reference for authentication and permissions.
- Look at the “Practices Survey Platform” API reference for Utility dashboards and suppliers data.

## GEOGRAPHICAL LOCATION

All machines are hosted in AWS US regions.

## ENCRYPTED DATA IN TRANSIT

All HTTP requests to [tspproject.org](http://tspproject.org) are done through SSL.

## ENCRYPTED DATA AT REST

EBS disk volumes on which databases are stored is encrypted using the industry-standard AES-256 algorithm.

## ROLE-BASED ACCESS CONTROL (RBAC)

User session management is implemented through DjaoDjin enterprise-grade RBAC Gateway.



# Where to start?

## APIs you are most likely to use to integrate with an internal ERP system

### Profiles, Billing and Access Control API

(<https://www.djaodjin.com/docs/reference/djaoapp/2023-09-22/api/>)

- Auth & credentials
- Billing
- Metrics
- Profile
- Roles & rules
- Subscriptions
- Themes

### Practices Survey Platform API

(<https://www.djaodjin.com/docs/reference/djaopsp/2023-09-22/api/>)

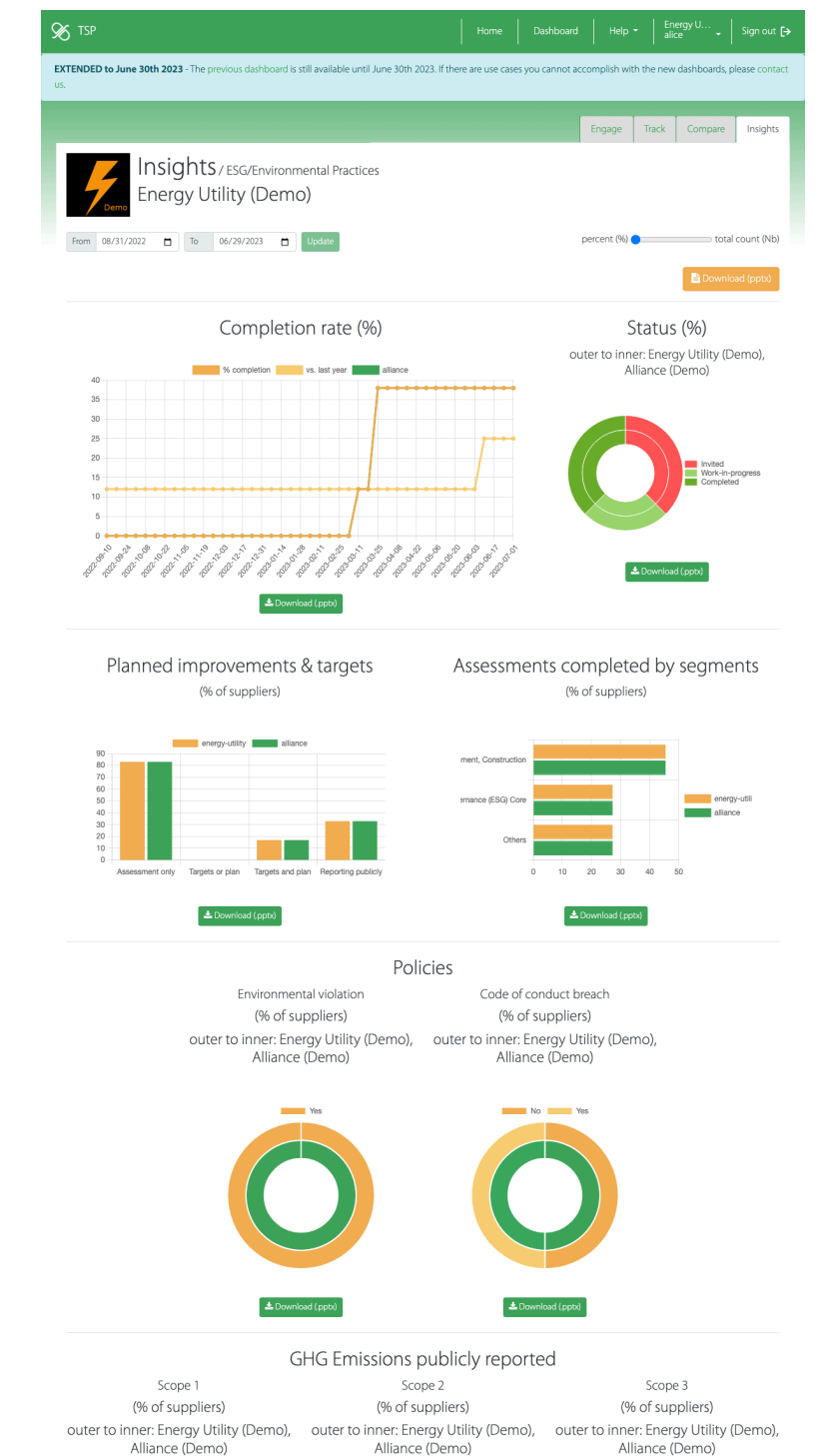
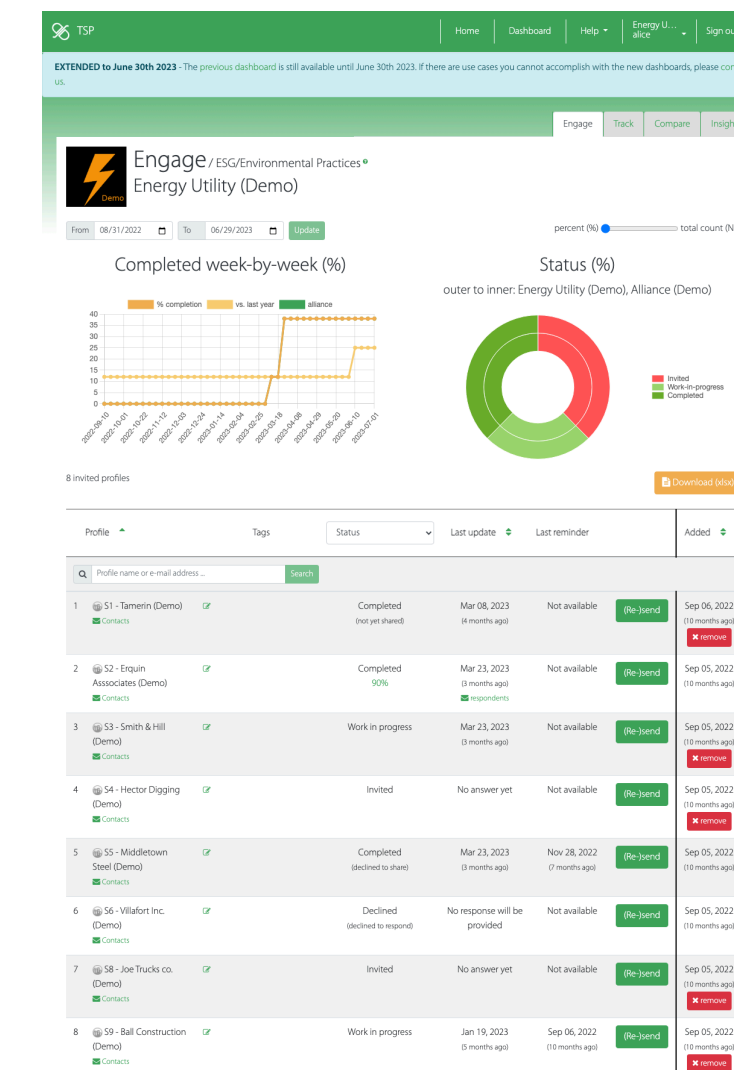
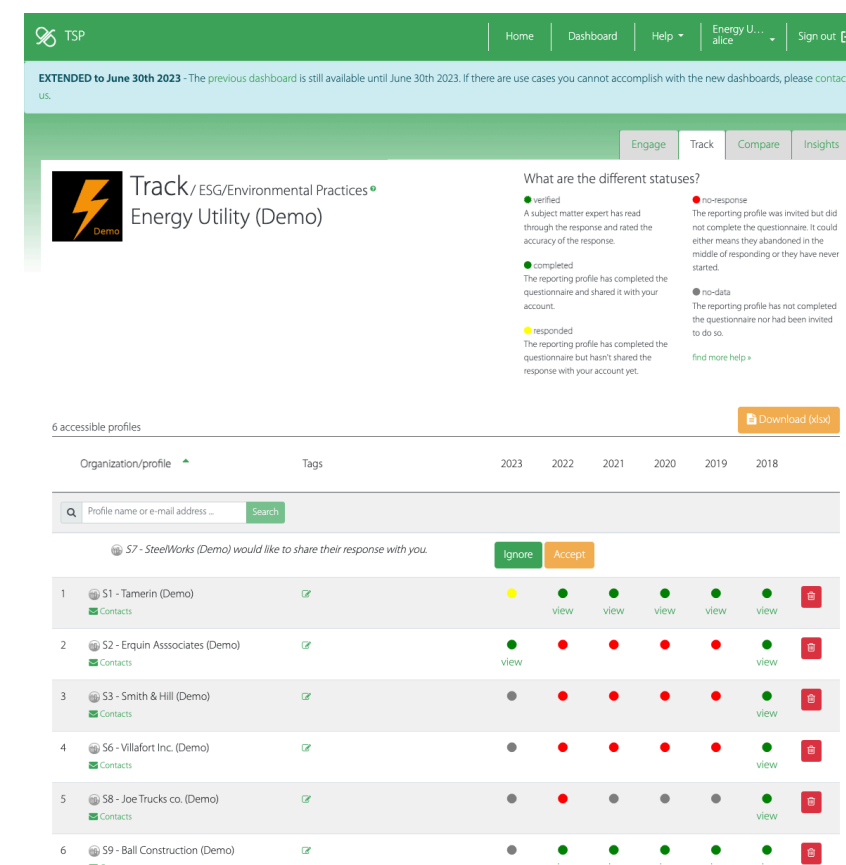
- Assessments
- Sharing
- Reporting
- Content readers
- Content editors



# 2023 Dashboards

## Each dashboard is built on a primary API endpoint

- **‘Track’** dashboard for year-round supplier relationship management
- **‘Engage’** dashboard to drive annual assessments completion rate
- **‘Insights’** dashboard to report supply chain statistics to stakeholders



# API Highlights

## LISTS TRACKED SUPPLIERS

GET /api/{profile}/reporting/{campaign}/accessibles

Example: GET /api/energy-utility/reporting/sustainability/accessibles

## LISTS ANSWERS FOR A SUPPLIER ASSESSMENT

GET /api/{profile}/sample/{sample}/content

Example: GET /api/energy-utility/sample/DDA134C8B4DA487DA9169E771794DEED/content

Full tutorial at <https://www.djaodjin.com/docs/tutorials/djaopsp/api-suppliers-data/>



# Thank you

[support@tspproject.org](mailto:support@tspproject.org)  
[help@djaodjin.com](mailto:help@djaodjin.com)



[www.tspproject.org](http://www.tspproject.org)  
by Djaodjin